

KLEYMAN – 1

3RD BRAKE LIGHT FLASHER
V1.5



INSTALLATION
&
PROGRAMMING

Before you begin:

Please make sure the key is out of the ignition

Tools needed:

Flat head screw driver

Approximate Installation Time:

35 minutes – 45 minutes

A word of caution:

This installation requires the use of a Resistor in order to convince the Mercedes lighting computer that the 3rd brake light is not malfunctioning during the flashing process and various modes.

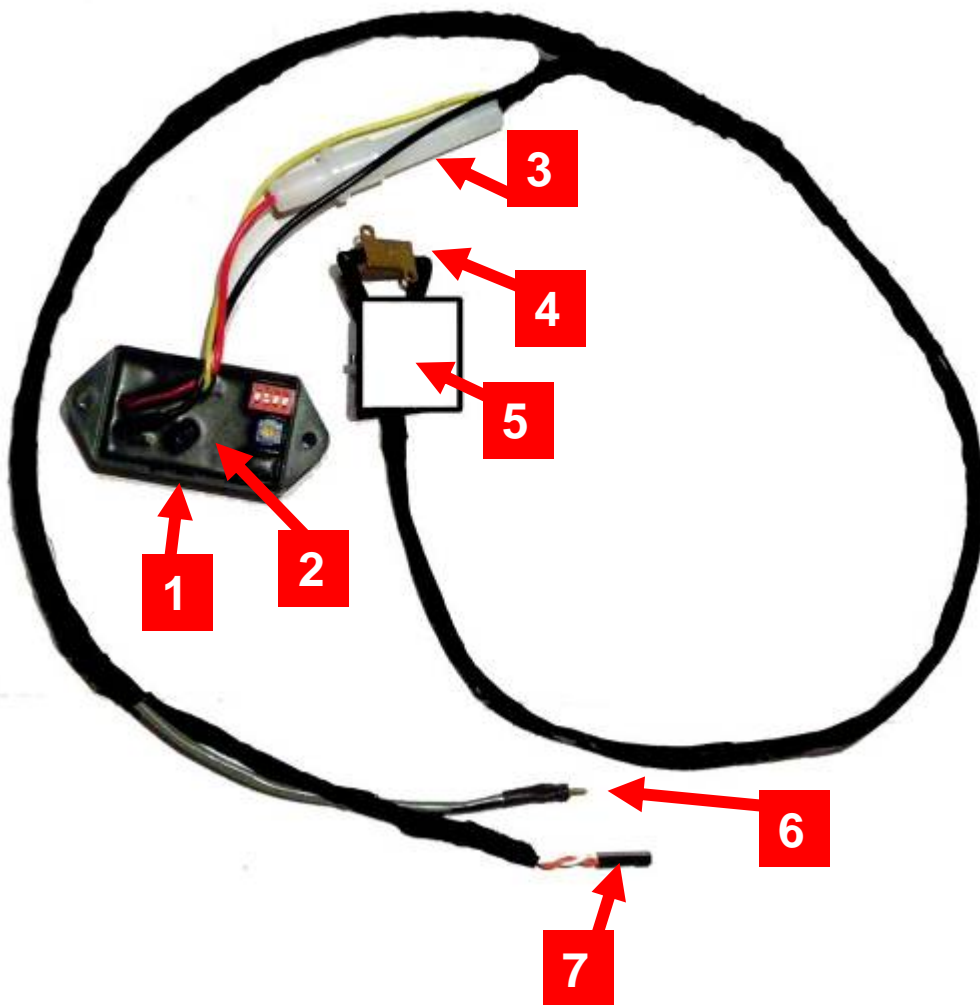
Resistors get extremely hot and if not installed correctly can cause heat damage to plastic and wiring. This module was designed with specific parts and part placement to prevent any damage that may be caused by heat from the resistor.

Please install ALL parts and follow proper placement of all parts as directed in the instructions.

I take no responsibility for misuse of the parts, improper installation, and or damage to your vehicle or warranty in any way.

Kleyman-1 Module

Overview

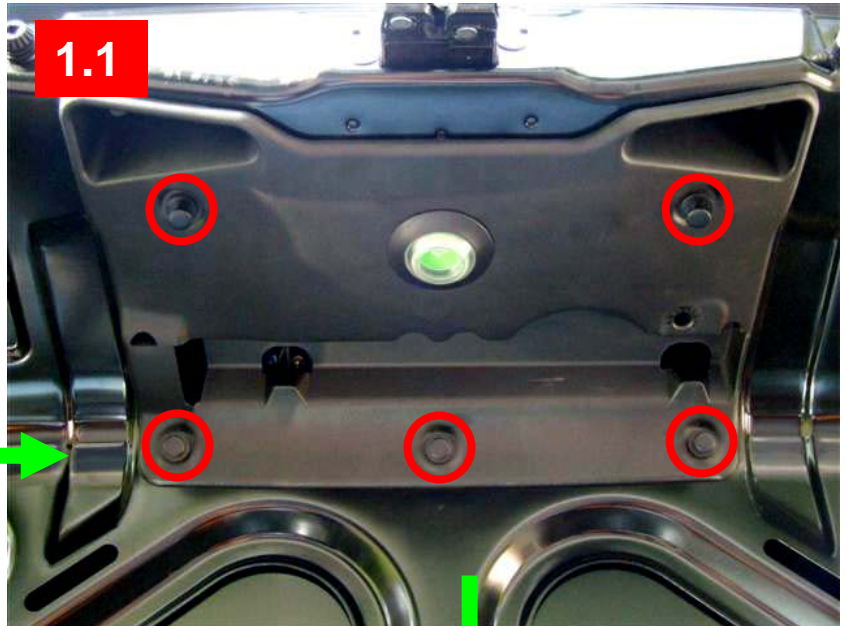


-
- 1) Velcro mount under module
 - 2) Control Module
 - 3) Fuse
 - 4) Resistor
 - 5) Resistor Mount
 - 6) To Stock Harness
 - 7) To 3rd Brake Light

Step 1

1.1) Please remove the 5 pushpins that hold the panel to the lid.
(Circled in red)

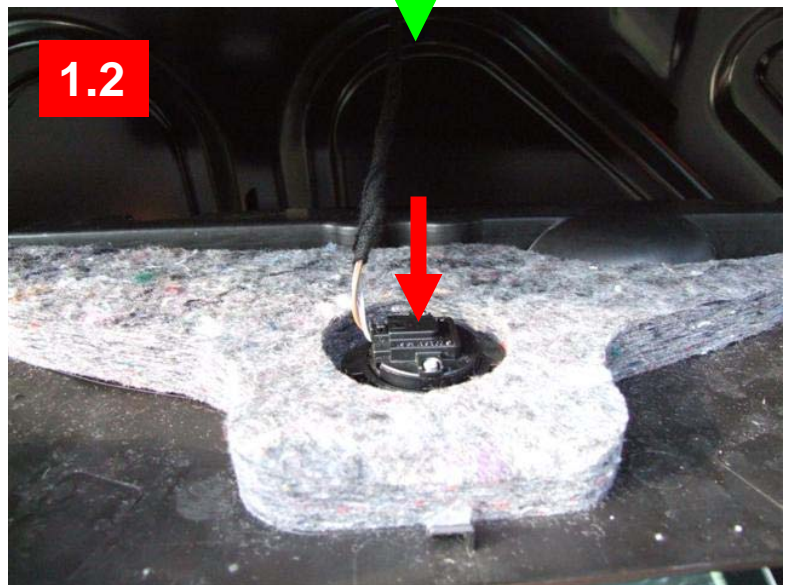
Insert a flat screwdriver below the pushpin cap.
Remove the top cap first
Then remove the bottom base.



Once you removed the 5 pushpins, you may lower the panel.

1.2) On the underside of the panel you will see a harness running to the green button from the other side.

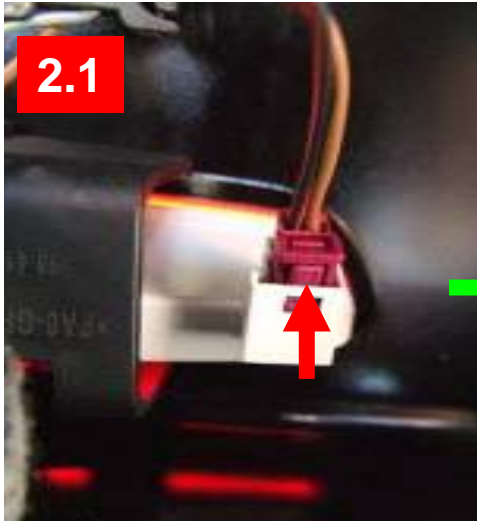
Unclip the harness from the button by pressing the little tab in the middle and pulling the harness out.



Step 2

2.1) Locate the 3rd brake light harness.

It will be on the right side of the 3rd brake light.



2.2) Remove the harness from the 3rd brake light by pressing **UP** on the tab in the middle and pulling the harness out.

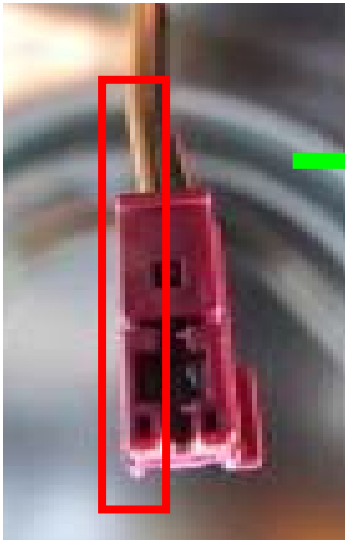


2.3) Plug in the **FEMALE** socket from the Kleyman-1 module into the **MALE** pins on the 3rd brake light.

WHITE WIRE MUST BE CONNECTED TO THE LEFT.

(Right wire color may vary)

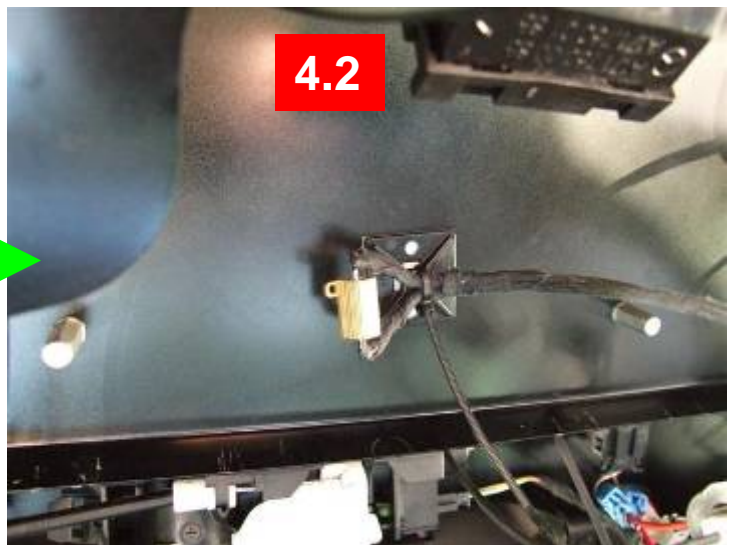
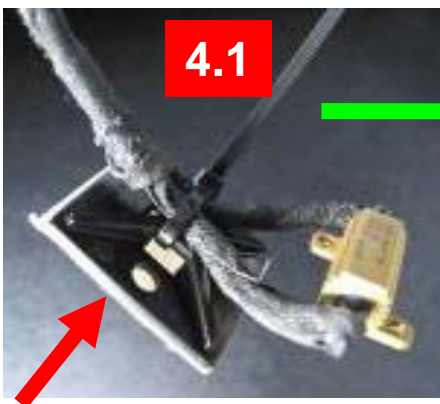
Step 3



3.1) Locate the black mark on the Grey wire.

BLACK marked side connects to BROWN wire side

Step 4



Locate the **Resistor & Mount**

4.1) Peel the white tape off the resistor mount

4.2) Stick the resistor & mount between the **2** silver pins

*****Make sure the resistor is slightly raised*****
****NOT TOUCHING ANYTHING****

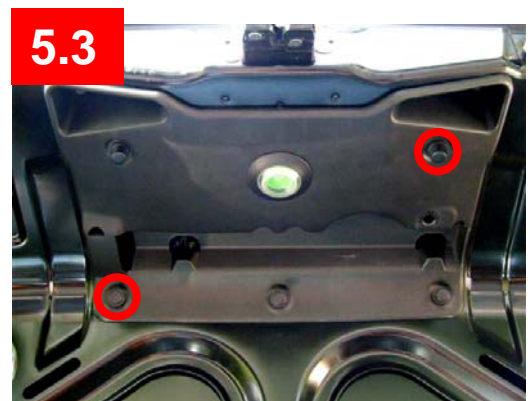
Step 5

5.1) Reconnect the harness removed in **Step 1.2**



5.2) Guide the module through the opening on the left side of the panel

5.3) Insert these 2 pushpins to hold the panel up while you complete the remaining steps



Step 6

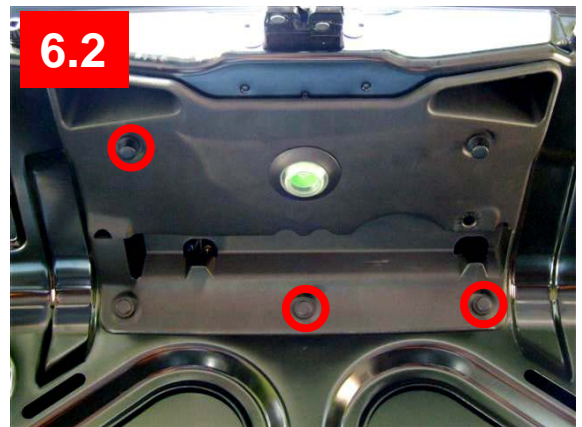
6.1) Position the module so you have easy access to the dip switches used to control various modes.

Peel tape off revealing the sticky side of the velcro.

Stick module to the panel in the cut-out opening.



6.2) Insert these 3 remaining pushpins.



Programming Modes



Switch Position				Mode
1	2	3	4	
OFF	OFF	OFF	OFF	3 Flashes, with repeat
ON	OFF	OFF	OFF	3 Strobe Burst, with repeat
OFF	ON	OFF	OFF	3 Strobe Burst, no repeat
ON	ON	OFF	OFF	3 Flashes, no repeat
OFF	OFF	ON	OFF	Constant Blinking
OFF	OFF	ON	OFF	SERVICE MODE: Turn blue dial clockwise till the end

Default Setting: 3 Strobe Burst, no repeat

If you choose to use the “Flashes”, you can adjust the rate by turning the blue dial. **(DOES NOT WORK FOR STROBE BURSTS)**

Service Mode: 3rd brake light will return to normal mode (constant on during braking) Kleyman-1 Module will be undetected by any Mercedes Diagnostic computers when taking the car for service.

To Disable Service Mode: Turn blue dial counter-clockwise, and select Switch Position for the desired Mode.